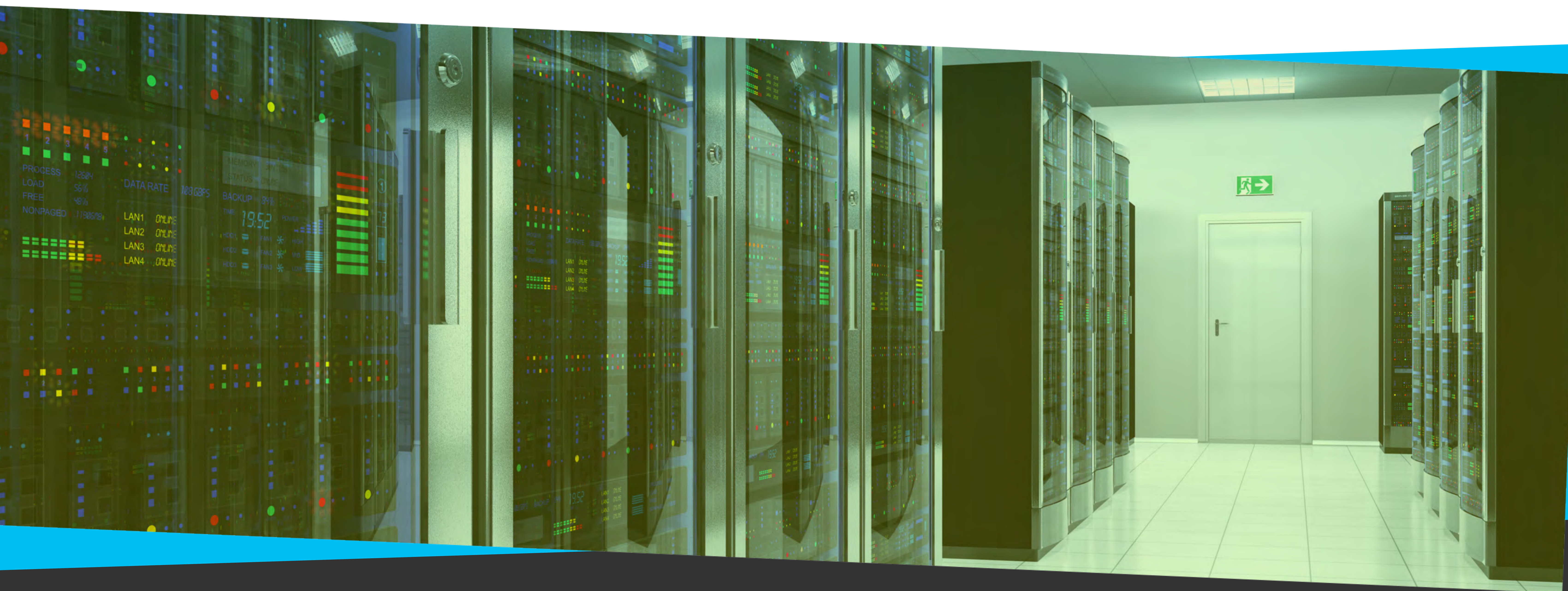




# INFRASTRUCTURE SOLUTION



## IT'S YOUR CLOUD ANYWAY YOU WANT IT

CommLink IT offers custom cloud solutions that deliver the flexibility, reliability and certified support that fit the distinct needs of your business and your customers' goals. This is what separates us from other cloud providers. Our business is the cloud. It's all we do. Our high-performance virtual server infrastructure solutions are scalable for any business—from SMBs to full enterprise systems.

Our expert team of VMware-certified engineers manage the infrastructure, which is built on industry-leading platforms such as VMware and Cisco. Our staff of sales and marketing professionals stand ready to assist you with comprehensive training, service and support before and after the sale. Whether your customers need a public or private cloud solution—or a hybrid cloud that blends the best of both worlds—CommLink IT gives you a full range of options to create the cloud you want, any way you want it. We are dedicated to providing you with cloud solutions that work, at a price you can afford and with a level of support that can't be beat.

# THE CISCO ADVANTAGE

Cloud services are not created equal. When you choose cloud or managed services to complement your business, you need to know that the technology powering them delivers the performance and scalability you require. CommLink IT's infrastructure is Cisco Powered—the industry benchmark from the leader in networking technology. Because our infrastructure is built on validated Cisco architecture, you have the confidence and agility to blend cloud and managed services with premise-based solutions. This lets you accelerate your opportunities, quickly adapt to changing needs and meet or exceed the performance of on-premise solutions, all without diverting focus from your core business.

## CLOUD OPTIONS TO FIT YOUR NEEDS

### PUBLIC CLOUD



The benefits of enterprise architecture for customers at any scale

This multi-tenant solution features shared storage, CPU, memory and network resources. With native hosting, this secure public platform offers a powerful blend of dependability, scalability and ease-of-use in a VMware computing environment—ideal for deploying classic and cloud-based applications or hosting business websites and workflows. Native and high-availability hosting is available with private or public, SATA-like, SAS-like or SSD-like storage options and includes Microsoft OS and VMware licensing.

### PRIVATE CLOUD



The scale and performance of public cloud with the flexibility and control of dedicated resources

This single-tenant solution is comprised of dedicated storage, CPU and memory, along with private network bandwidth and connectivity. Full control of this environment enables resources to be reallocated on-demand while maintaining high performance and availability. The architecture is powered by VMware vSphere. Native and high-availability hosting is available with private or public, SAS-like or SSD-like storage options and includes Microsoft OS and VMware licensing.

### HYBRID CLOUD



The convenience and affordability of a public cloud with the security of a private cloud

Hybrid cloud solutions enable you to mix and match shared and dedicated virtual server resources to keep each aspect of your business in the most efficient environment possible. Powered by VMware, applications and workloads can be moved between clouds, which accelerates deployment times without having to fully reconfigure network settings.

# STORAGE TIERS

## PREMIUM

Higher I/O available for highly transactional servers. Low latency and high throughput performance provided by all Flash Storage.

Encrypted at rest.

Ideal for: SQL servers and Remote Desktop servers

## STANDARD

Equivalent I/O to a typical small business-sized server. Latency and throughput are both on par with average SAS-based storage media.

Encrypted at rest.

Ideal for: Web servers and Active Directory servers

## ARCHIVAL

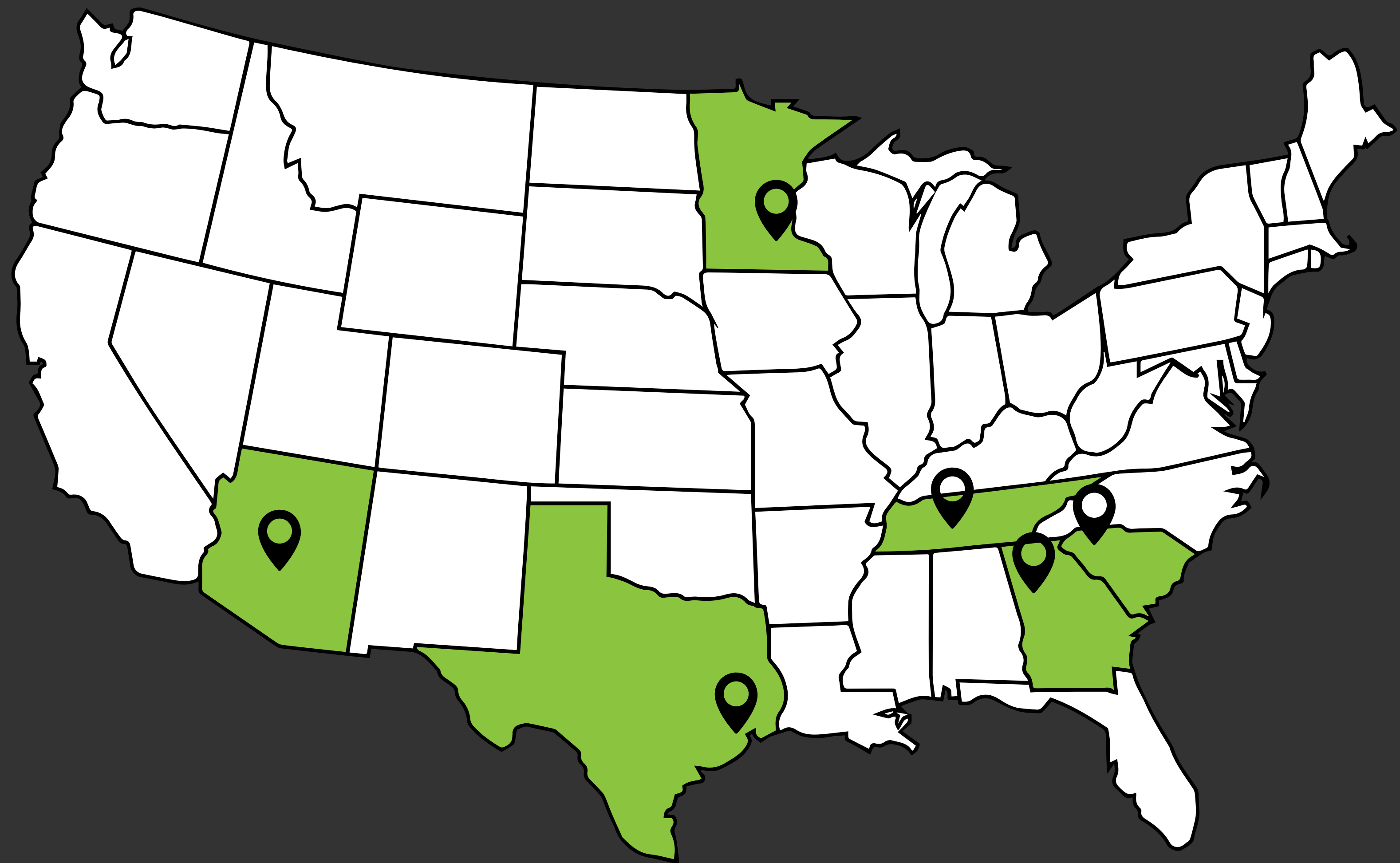
Low I/O server with storage built for infrequently accessed data. No guaranteed I/O. High latency and low throughput for SATA-like performance.

Ideal for: Infrequently accessed data

## OUR DATA CENTERS

### LOCATIONS

Atlanta, GA  
Greenville, SC  
Houston, TX  
Minneapolis, MN  
Nashville, TN  
Phoenix, AZ



## BACKUP & DRAAS OPTIONS

	BACKUP		DRAAS WITH STORAGE REPLICATION	DRAAS WITH ZERTO
SERVICE OPTION	standard backup	replicated backup	replicated array-based snapshots	hypervisor replication
TYPE	backup	backup	snapshot replication	continuous write-mirroring
LOCATION	local or offsite data center	duel data centers	CL recovery data center	CL recovery data center
RPO	24 hours	24 hours	24 hours per VM	<15 minutes per VM
RETENTION PERIOD	configurable	configurable	7 days	24 hours
RTO	none	none	24 hours per VM	<1 hour per VM
FILE LEVEL RESTORE	yes	yes	no	no

# CERTIFICATIONS & COMPLIANCE

SOC 2 TYPE II CERTIFICATION  
 SOC 3 CERTIFICATION  
 PCI - DSS CERTIFICATION

CSA STAR LEVEL 2 ATTESTATION  
 HIPAA COMPLIANT

## CLOUD PRODUCT SPECS

FEATURES	PUBLIC CLOUD SPECIFICATIONS	PRIVATE CLOUD SPECIFICATIONS
SOFTWARE	VMware vCloud Director	VMware vSphere Enterprise Plus
STORAGE TIERS	Premium (SSD-like): at least 1000 IOPS at <5ms latency, at-rest encryption Standard (SAS-like): at least 250 IOPS at <20ms latency Archival (SATA-like): I/O not guaranteed	Shared Storage on public tiered storage Dedicated storage available
OS SUPPORTED	Windows Server: 2008(R2), 2012(R2), 2016, 2019; Linux: CentOS, Ubuntu LTS	Any VMware-supported OS
INTERNET BANDWIDTH	Unmetered starting at 20Mbps provided per VDC	Unmetered starting at 20Mbps provided per private cloud environment
VM BACKUP	Optional IaaS backup available	Bring your own backup solution available
PUBLIC IP ADDRESSES	One IP per vDC; One usable IP required with purchase of bandwidth	One IP included
FIREWALL**	NXS Edge, Cisco ASA, Fortinet Fortigate, BYOL	Cisco ASA, Fortinet Fortigate, BYOL
LICENSING	Microsoft Licenses available under SPLA licensing	Microsoft licensing available under SPLA licensing
PER-VM SIZING OPTIONS	Per-VM Maxima: - Up to 8 vCPU - Up to 128GB vRAM - Up to 10TB per vDisk	Private cloud can support VMs larger than public cloud limits

\*ADDITIONAL FEES MAY APPLY

\*\*ADDITIONAL PROFESSIONAL SERVICES, NETWORKING AND SECURITY OPTIONS ARE AVAILABLE

